

# B&C OXFORD LSL /WOMEN - BK03

THE SHIRT CULTURE  
BE INSPIRED



## ADJUSTED FIT

- Cotton rich polycotton Oxford fabric with **Easy Care** finish
- Soft feminine collar
- Cross stitched mother-of-pearl effect buttons (except Oxford Blue: mother-of-pearl effect white buttons)
- 2-button adjustable cuffs
  - a. Rounded cuffs
  - b. Additional cufflink buttonholes
- Darts at bustline & back panel for a feminine shape
- Horizontal last buttonhole
- Curved bottom hem



- 70% combed cotton - 30% polyester
- Oxford
- 135 g/m<sup>2</sup> EASY CARE
- XS > 6XL
- 1 pc/pack & 10 pcs/carton



**DUO CONCEPT**  
with B&C Oxford LSL /men

## SIZES [CM]

B&C OXFORD LSL /W. SW 003	XS	S	M	L	XL	2XL	3XL	4XL	5XL	6XL
A DRESS SIZE	34	36	38	40	42	44	46	48	50	54
B CHEST SIZE	88	92	96	100	104	110	114	120	124	134
C CENTER BACK LENGTH	65	66	67	68	69	70	71	72	73	74



THE SHIRT CULTURE  
BE INSPIRED

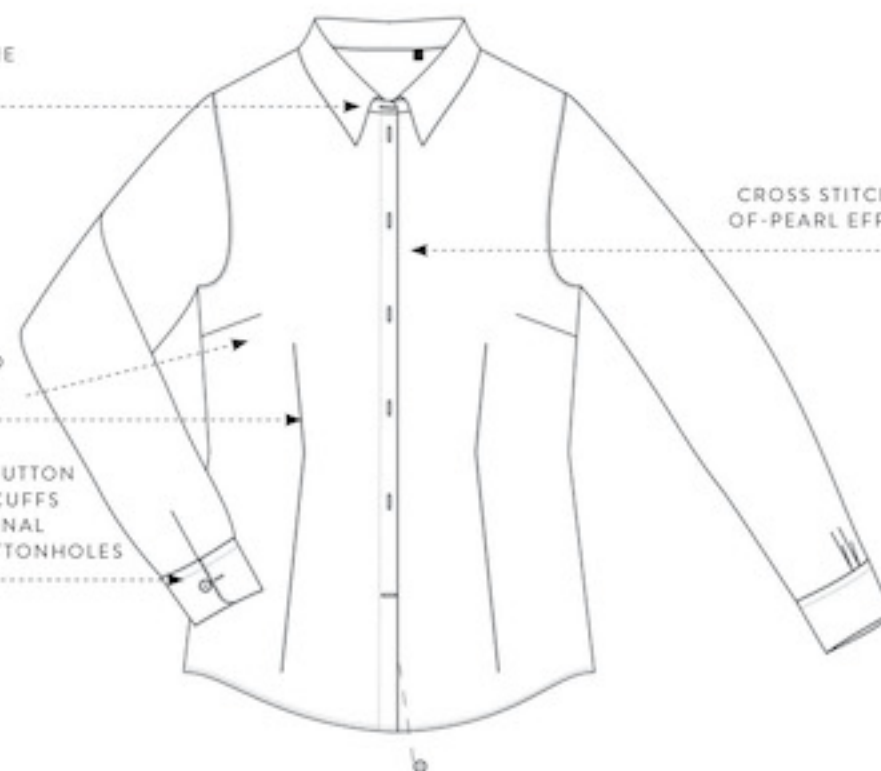
## WOMEN'S LONG SLEEVED EASY CARE OXFORD SHIRT

SOFT FEMININE COLLAR

CROSS STITCHED MOTHER-OF-PEARL EFFECT BUTTONS

DARTS AT BUSTLINE AND FRONT PANEL

ROUNDED 2-BUTTON ADJUSTABLE CUFFS WITH ADDITIONAL CUFFLINK BUTTONHOLES



DARTS AT BACK PANEL

CURVED BOTTOM HEM

